



Department Highlights

Biology

Department website: ewu.edu/cstem/biology/



Cheney MayFest on May 11 found Biology members, for the 5th year in a row, hosting an engaging booth for families and communities members!

The Joyner-Matos lab and Spruell lab hosted an informational table about fish that are invasive species and all of the aquatic invertebrates (bugs) that they eat. Pictured are two Joyner-Matos lab students – Natalie McGuire and Sayla Merritt (1). Kids had fun trying to catch bugs and feeding them to the fish; they went home with stickers, coloring sheets and search-a-word puzzles about aquatic habitats and pet fish.

The Allen lab and the Herbarium Club hosted an informational table about plants; this was the first time Biology has had a second booth at Mayfest. The picture shows Dr. Allen and two graduate students, Katherine Cole and Julianna Paulsen (2). The kids got to look at plants under a microscope and went home with plants and seed-filled chia pets (Jessi might have a better description for this), coloring sheets and other EWU Biology swag.

We continue to enjoy bringing some STEM activities to this very busy festival and look forward to visiting with Cheney families again next year!



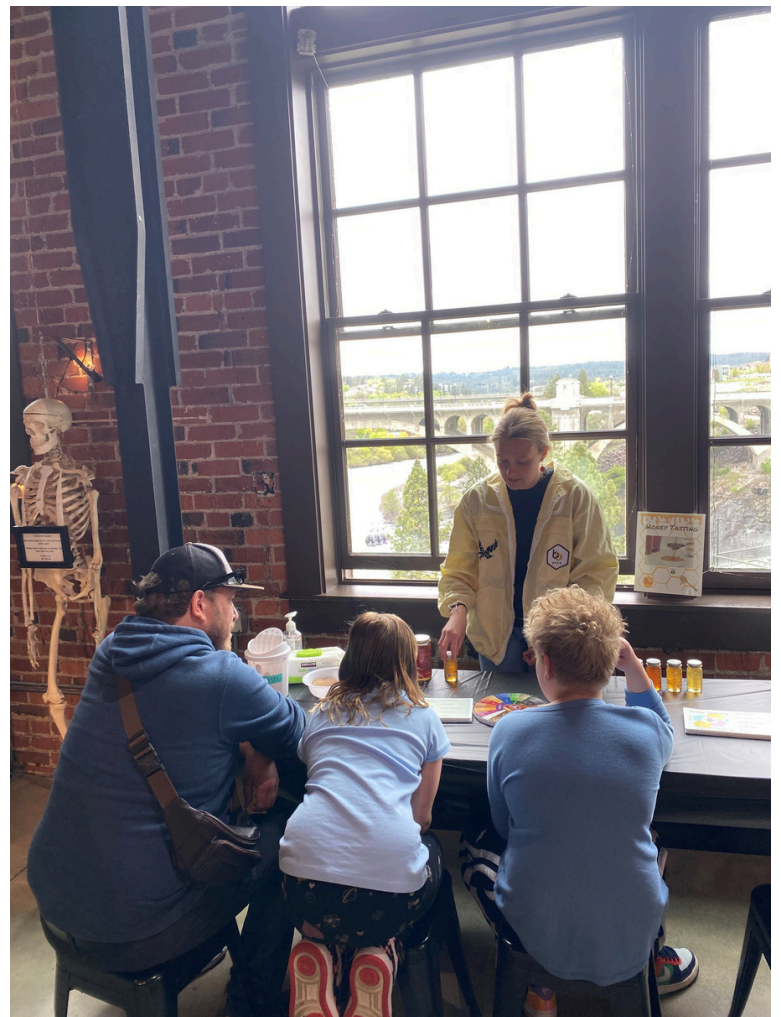


Department Highlights

Biology

Department website: ewu.edu/cstem/biology/

Outreach Event - The Walke Lab, along with three undergraduate and two graduate Biology students held an outreach event at Mobius Discovery Center this month. Students from the Walke Lab are also presenting at the Northwest Science Association meeting! Thank you from the community, and congratulations!





College of Science, Technology,
Engineering & Mathematics
Eastern Washington University

Newsletter

May 2024



**Thank you
Professor Milling!**

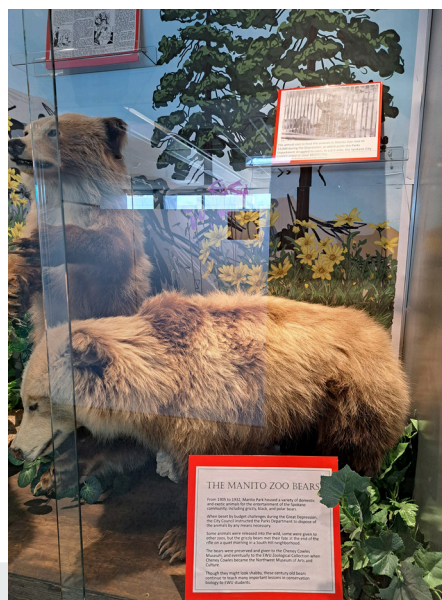


**Congratulations
Friends of the
Herbarium for winning
the Science Building
Display Case
Competition!**

May 16, 2024



**Biology
Graduate
Student
Organization
Display rocks
too!**





College of Science, Technology,
Engineering & Mathematics
Eastern Washington University

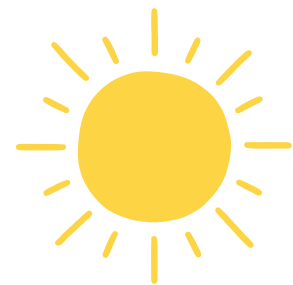
Newsletter

May 2024

Department Highlights

Chemistry, Biochemistry, and Physics

Department website: ewu.edu/cstem/chemistry-biochemistry/ and ewu.edu/cstem/physics



**Displays by the EWU Chemistry Club
and chemistry, biochemistry, and
physics department lab technician,
Fred!**





College of Science, Technology,
Engineering & Mathematics
Eastern Washington University

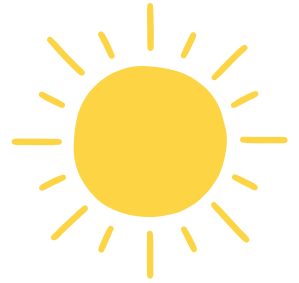
Newsletter

May 2024

Department Highlights

Design

Department website: ewu.edu/cstem/design/



- On May 18, Design students hosted a table and maker station for Spokane Zine Fest at the Spokane Library Central Branch.
 - You can view images on Design's instagram (@ewu.design): https://www.instagram.com/ewu.design/p/C7M4VJsphTn/?hl=en&img_index=1
 - An article here: <https://www.inlander.com/culture/spokane-zine-fest-fosters-a-niche-counterculture-for-self-expression-and-storytelling-at-its-one-day-only-event-25935319>
 - And a blog post from the Library here: <https://www.spokanelibrary.org/2024/05/spokane-zine-fest-2024/>
- On June 1 and 2, Design will host a Riso Workshop with our Spring Riso Resident, Alex Sensiba
 - Both events will be held 11am - 3pm at CAT 172

WORKSHOP RISO WORKSHOP RISO WORKSHOP RISO WORKSHOP RISO

RISOGRAPH WORKSHOP

★ JUNE 1ST AND 2ND ★

**FAUX-CMYK/
FOUR-COLOR
WITH**

**"SPECTRO-
LITE"**

with Alex Sensiba ★
@alxdae
www.alexsensiba.com

@ EWU 601 East Riverside Ave,
Spokane, WA

QUESTIONS?
please reach out to
JKUHN87@EWU.EDU
as soon as possible!

* SPECTROLITE is available free on M&C only,
please have software downloaded prior to the
workshop (<https://spectrolite.app/>)

EWU STUDENTS: \$15

*first 10 students to RSVP print FREE!

COMMUNITY MEMBERS: \$30
(PAPER INCLUDED WITH FEE)

RSVP @

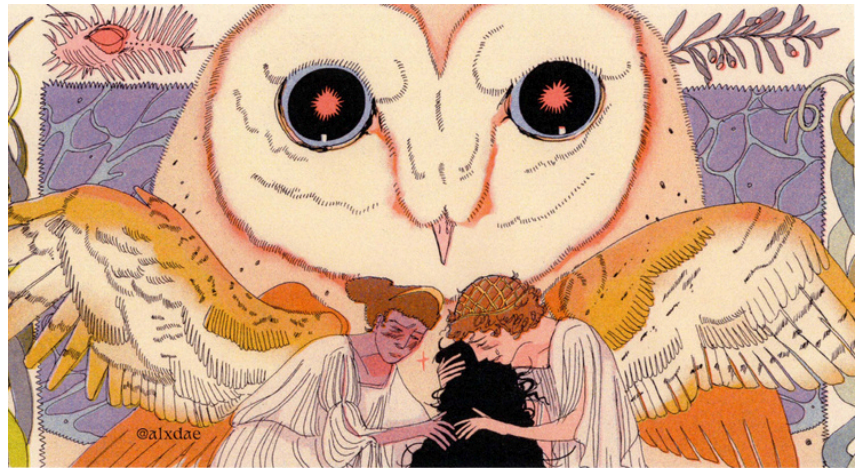


BRING: MAC device (with SPECTROLITE) + digital files (photos/drawings/
doodles/comics/etc) OR physical work to be scanned



DAY 1: INTRODUCTION + PRINTING
DAY 2: MORE PRINTING

@alxdae



risograph workshop

**Faux-CMYK/
Four Color
with "Spectrolite" ***

with Alex Sensiba ★
@alxdae
www.alexsensiba.com

**JUNE
1ST AND
2ND**



EWU 601 East Riverside Ave,
Spokane, WA

RSVP @



BRING: MAC device (with SPECTROLITE) + digital files (photos/drawings/
doodles/comics/etc) OR physical work to be scanned

EWU STUDENTS: \$15 (first 10 students to RSVP print FREE!)
COMMUNITY MEMBERS: \$30
(PAPER INCLUDED WITH FEE)

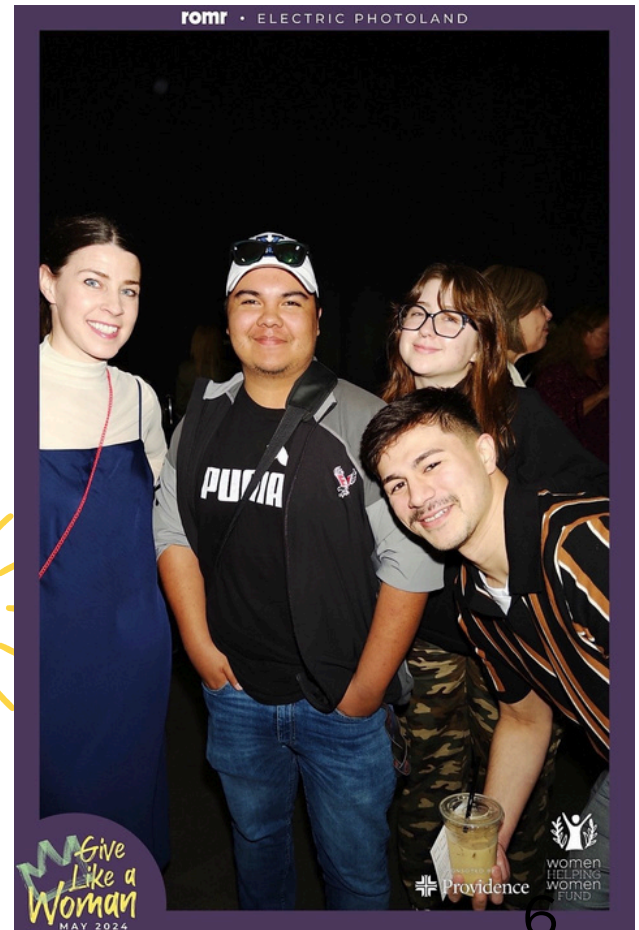
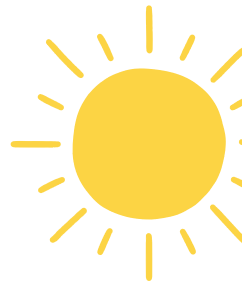
* SPECTROLITE is available free on M&C only,
please have software downloaded prior to the
workshop (<https://spectrolite.app/>)



Department of Design Roundup

Professor Travis Masingale has presented on the topic of Artificial Intelligence at 11 events in past six months, including “Opening Computational Frontiers: Empowering First-Generation Designers,” hosted by AIGA Design Educators in New York City; and “AI in the College Classroom: Supporting Faculty and Personalizing Student Learning” and “AI and Writing” at MSU Denver. (As well as many talks and workshops at EWU and around Spokane!)

Senior Lecturer Sonja Durr’s VCD 3 students worked with the Women Helping Women Fund to create inspiring artwork for their annual fundraiser. Over 1,300 people attended the event, walking past the posters on their way to see keynote speaker Sean Astin.





Design Roundup

Professor Ginelle Hustrulid and Lecturer Jamin Kuhn will offer their third Risograph Workshop in early June in the Catalyst Building's 4D Lab. This event will feature current Risograph Resident, Alex Sensiba. These weekend workshops bring local artists and EWU students together to generate unique prints using the lab's signature piece of equipment.



The Department of Design, in collaboration with the Risograph Residency of Spokane, is hosting their 2nd Risograph artist Alex Sensiba, who is currently creating, printing, and binding a 30-page graphic novel. She will host a 2-day workshop June 1st and 2nd, showcasing her process and teaching attendees how to create artwork on a Risograph printer. Alex (@alxdae) is inspired by medieval tapestries, haunted houses, horses, and magic spells. She graduated from the School of the Art Institute of Chicago in 2023 with a Bachelor of Fine Arts.



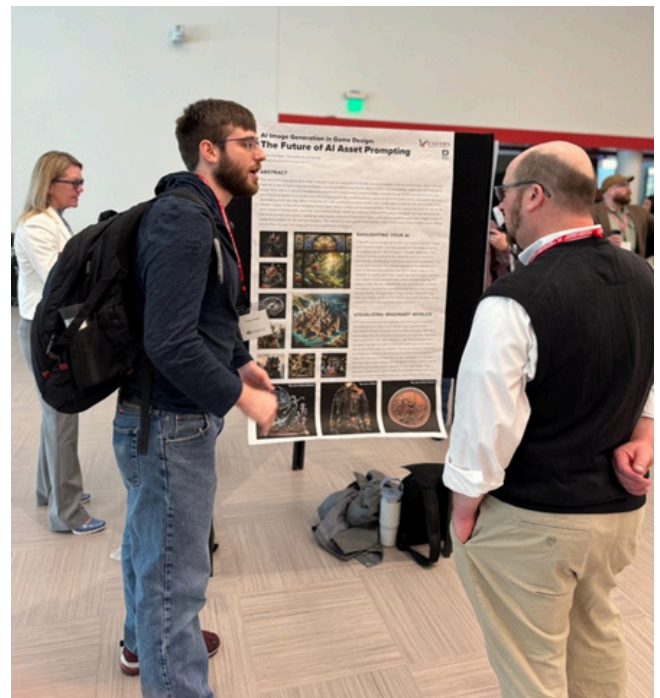
Design Roundup



Two design students mentored by **Professor Travis Masingale** presented AI-based projects at the Student Research and Creative Works Symposium. **Trinity Boyd** shared her poster on “Crafting Your Personal AI Dietitian for Holistic Health,” and **Travis Hodges** presented “AI Image Generation in Game Design: The Future of AI Asset Prompting.”



Assistant Professor Colin Manikoth mentored Design student **Morgan Whapeles** on her poster presentation entitled “Exploring the Social and Education Dynamics of the Apple Vision Pro.”



Design Roundup



Travis Masingale, Ginelle Hustrulid, Colin Manikoth, and Sonja Durr hosted 50 students from NEWTech High School at the Catalyst Building for a day of design-related activities in April. In addition to learning about the Visual Communication Design program, students were introduced to motion design, block-printing, and virtual and augmented reality (via headsets).



Design Roundup

Lecturer Sam Mills and a group of Design students attended Spokane Zine Fest to sell their zines (hand-made books), stickers, prints and buttons. The group interacted with local zine-makers and chatted with attendees about their work. Like last year, every student who submitted an item made a sale. EWU Design students also left their mark on this year's festival by helping run raffles at the main table, photo-documenting the event, and running a free "maker table" on the main stage, where anyone could make their own button or zine.



Department Highlights

Mathematics

Department website: ewu.edu/cstem/mathematics/

WiSE, Women in Science at EWU, were busy this quarter by hosting two Women in Science Speakers and community nights, such as at South Pines Elementary. Thank you for your community dedication!



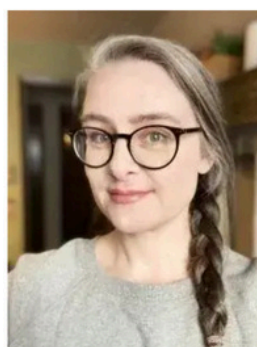
The WiSE club
presents
ELIZABETH WINER
*Reflections of a Secondary
Science Teacher*

Liz Winer will share the ups and downs of her teaching career, which encompasses 3 years substitute teaching, 6 years brick & mortar, 6 years online, and just about every subject: biology, physics, earth science, physical science, and environmental science.

Elizabeth (Liz) Winer graduated with a B.S. Education from Central Michigan University and a M.A. Education from the University of Findlay. She is part of the Washington state science standards review team and a board member of Cheney Public Schools. She is married to math education professor Dr. Michael Winer and has a first and fourth grader.

Wednesday, May 15th at 3pm
in PAT 110

And on zoom:
Meeting ID: 867 1716 1928
Password: 535448



The WiSE club
presents
Amber McConnell
*Breaking Barriers: Learning from
Feminism to Shape an Inclusive
Scientific Community*

In this presentation I will discuss the ways in which historical gender biases and systemic inequalities persist in contemporary scientific research, and what the scientific community can learn from the feminist community to achieve a more equitable and robust form of scientific inquiry. This talk aims to inspire reflection, dialogue, and action towards creating a more equitable and inclusive scientific community, where the contributions of all individuals, regardless of gender, are recognized, valued, and celebrated.

Tuesday, April 23rd at 2pm
in PAT 110

And on zoom:
Meeting ID: 897 9450 3711
Password: 729317





Department Highlights



Mathematics

Department website: ewu.edu/cstem/mathematics/

Congratulations to the Math Department on winners of the EWU Eagle Grant!

- Updating math labs technology and making spaces more welcoming
- Added printers, free printing, lamps and twinkle lights for study rooms, and clocks to help with time management during proctored exams
- Added a beverage station to provide students with pick-me-up coffee, tea, hot cocoa
- Restock supplies like dry erase markers, whiteboards, graphing calculators, and pencil sharpeners

Math tutoring labs together had 1,690 check-ins Fall quarter, with 387 unique students served. For Winter quarter as we've put into place our grant funds, we've improved even more with 1,756 check-ins and 405 unique students served. We provide free, drop-in tutoring and most students average over an hour per visit. We also proctor exams (in Kingston) and offer free calculator check-out to students for short term needs.

Although we still have some room to improve our labs, we're excited about some of the changes happening to make our spaces better for our students. Feel free to pop in to Monroe 114 or Kingston 337 to see our new stuff and check out our amazing tutors in action!

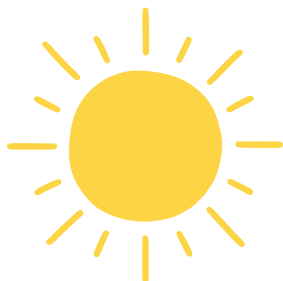


Department Highlights

Geosciences

Department website:

ewu.edu/cstem/geosciences/



Geosciences Club Display

June 11 Poster Session to Highlight EWU's New Scanning Electron Microscope!

Scanning Electron Microscope (SEM): Poster Session

WHAT: student and faculty research using EWU's new SEM; and opportunities to incorporate SEM into research & teaching
WHEN: 10 am – noon, Tuesday, June 11, 2024
WHERE: Cheney Hall Rm 111 (Scanning Electron Microscopy Lab)

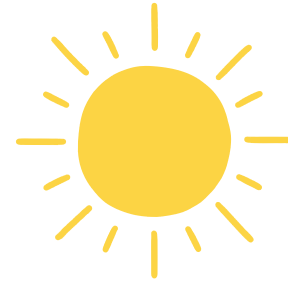
This material is based upon work supported by the National Science Foundation under Grant No. 2117210.

Faculty and students from Geosciences (Nezat, MacKenzie, Pritchard), Biology (Allen, Milling), Chemistry (Masiello), Physics (Stoke), and recruiting more for the future!

Department Highlights

Mechanical Engineering and Technology

Department website: ewu.edu/cstem/ment/



ME/MET Capstone

You are invited to the **Mechanical Engineering and Mechanical Engineering Technology Capstone Expo**. The showcase will be **Wednesday, June 5, 2024**, from **2:00 – 4:00 p.m.** in the **CEB Lobby**. Please join us to celebrate student achievement and enjoy some refreshments!

The Capstone Expo showcases the culminating projects of students from the ME and MET programs. Spring quarter's projects will feature the six teams below. [Full project descriptions.](#)

- Automated Can Crusher
- Robot Knife Edging Automation
- EZ Eagle Spa Cover
- Smart Chess Board
- eVTOL Drone
- Leidenfrost Pump

We hope you can stop by – even if it is just for a few minutes – and take a look at the ME/MET student projects... and enjoy some refreshments! Thank you!

