



**TOWNHOUSE SIZE:**

- APPROX. 1110 SQ FT
- UPSTAIRS: 460 SQ FT
- DOWNSTAIRS: 597 SQ FT
- PATIO/STORAGE: 43 SQ FT

**APPROX. BEDROOM SIZES:**

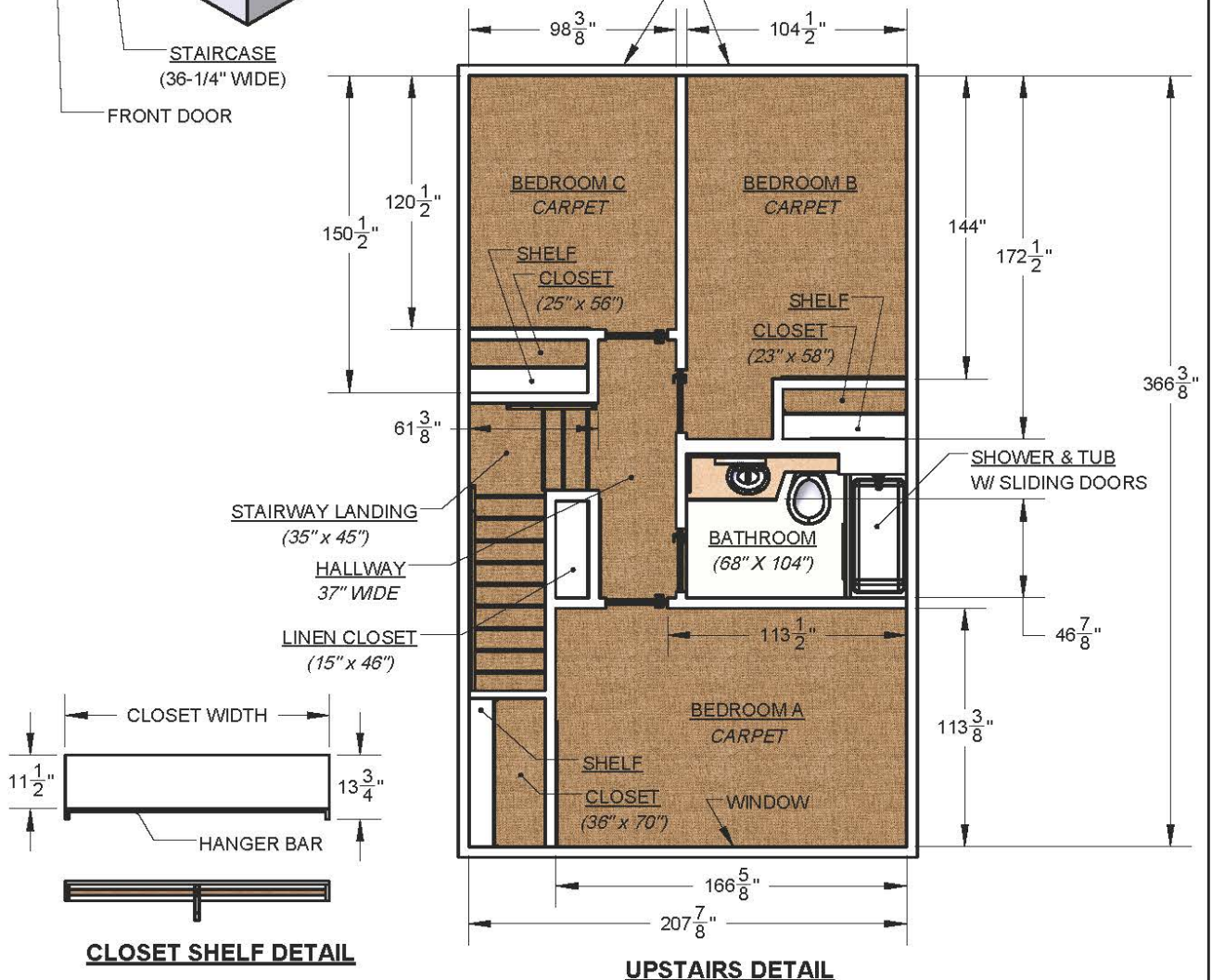
- A) 9' x 13' \*
- B) 9' x 12' \*
- C) 8' x 10' \*
- \*EXCL. CLOSET SPACES

**UNIT NOTES:**

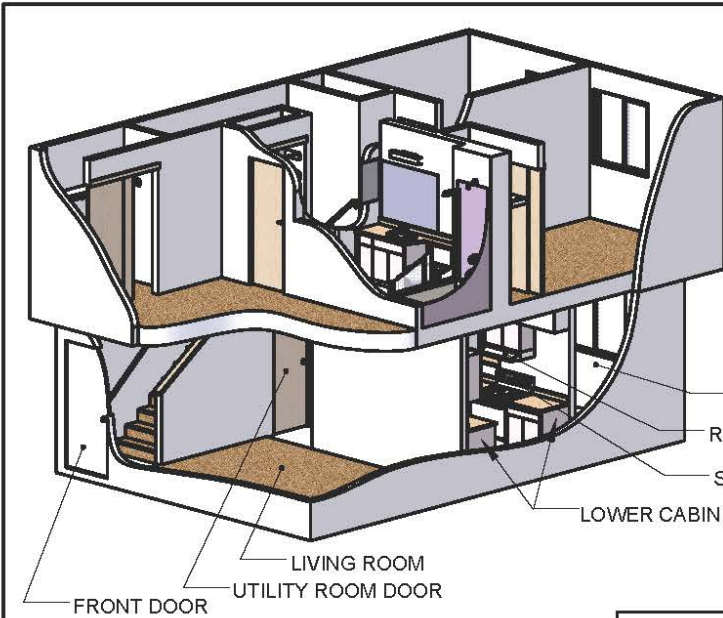
- CLOSET SHELF HEIGHT: ... .. 65"
- CEILING HEIGHT: ... .. 96"
- STAIRWAY MIN CLEARANCE: ... .. 64"
- BATHROOM COUNTER HEIGHT: ... .. 32"
- LINOLEUM FLOORS EXCEPT AS NOTED

**DOOR SIZES:**

- INTERIOR: 30" x 80"
- CLEARANCE: 29-1/2" x 80"
- EXTERIOR: 35-1/2" x 78"



			<b>UNIVERSITY APARTMENTS: 3-BR 1-BA</b>		
<b>REVISION LOG</b>		<b>DATE</b>	<b>BY</b>	<b>DR. GJB 08.05.18</b>	<b>TOWNHOUSE FLOOR PLANS</b>
				<b>B0004D</b>	<b>SHT. 1 OF 2</b>



**TOWNHOUSE SIZE:**

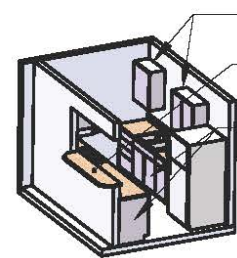
- APPROX. 1110 SQ FT
- UPSTAIRS: 460 SQ FT
- DOWNSTAIRS: 597 SQ FT
- PATIO/STORAGE: 43 SQ FT

**UNIT NOTES:**

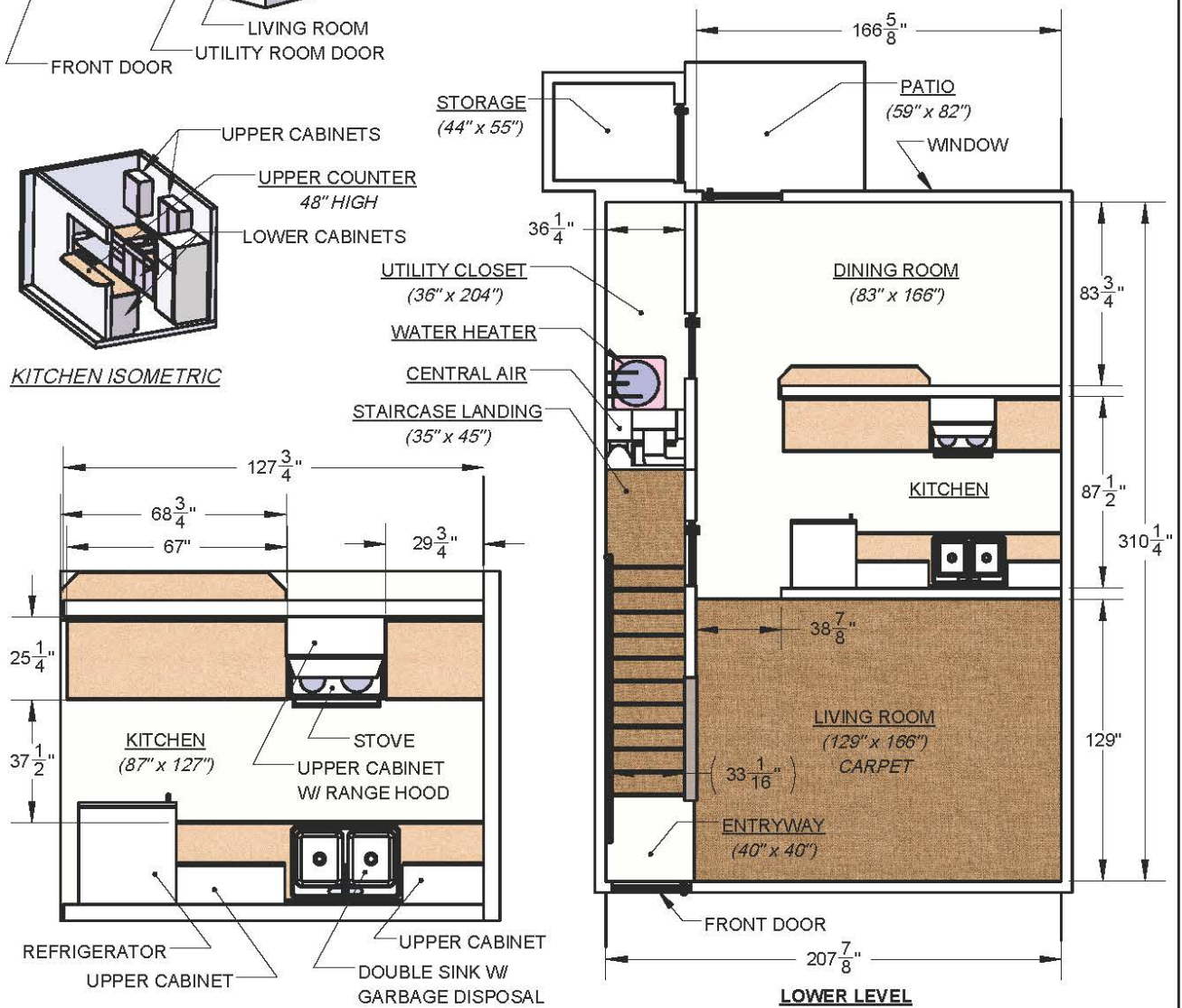
- CEILING HEIGHT: ... .. 96"
- STAIRWAY MIN CLEARANCE: ... .. 64"
- KITCHEN COUNTER HEIGHT: ... .. 36"
- LINOLEUM FLOORS EXCEPT AS NOTED

**DOOR SIZES:**

- INTERIOR: 30" x 80"
- CLEARANCE: • 29-1/2" x 80"
- EXTERIOR: 35-1/2" x 78"



**KITCHEN ISOMETRIC**



**KITCHEN DETAIL**

			<b>UNIVERSITY APARTMENTS: 3-BR 1-BA</b>		
			DR. GJB 08.05.18	<b>TOWNHOUSE FLOOR PLANS</b>	<b>B0004D</b> SHT. 2 OF 2
REVISION LOG	DATE	BY			