

CEILING HEIGHT: 96"

TOWNHOUSE SIZE:

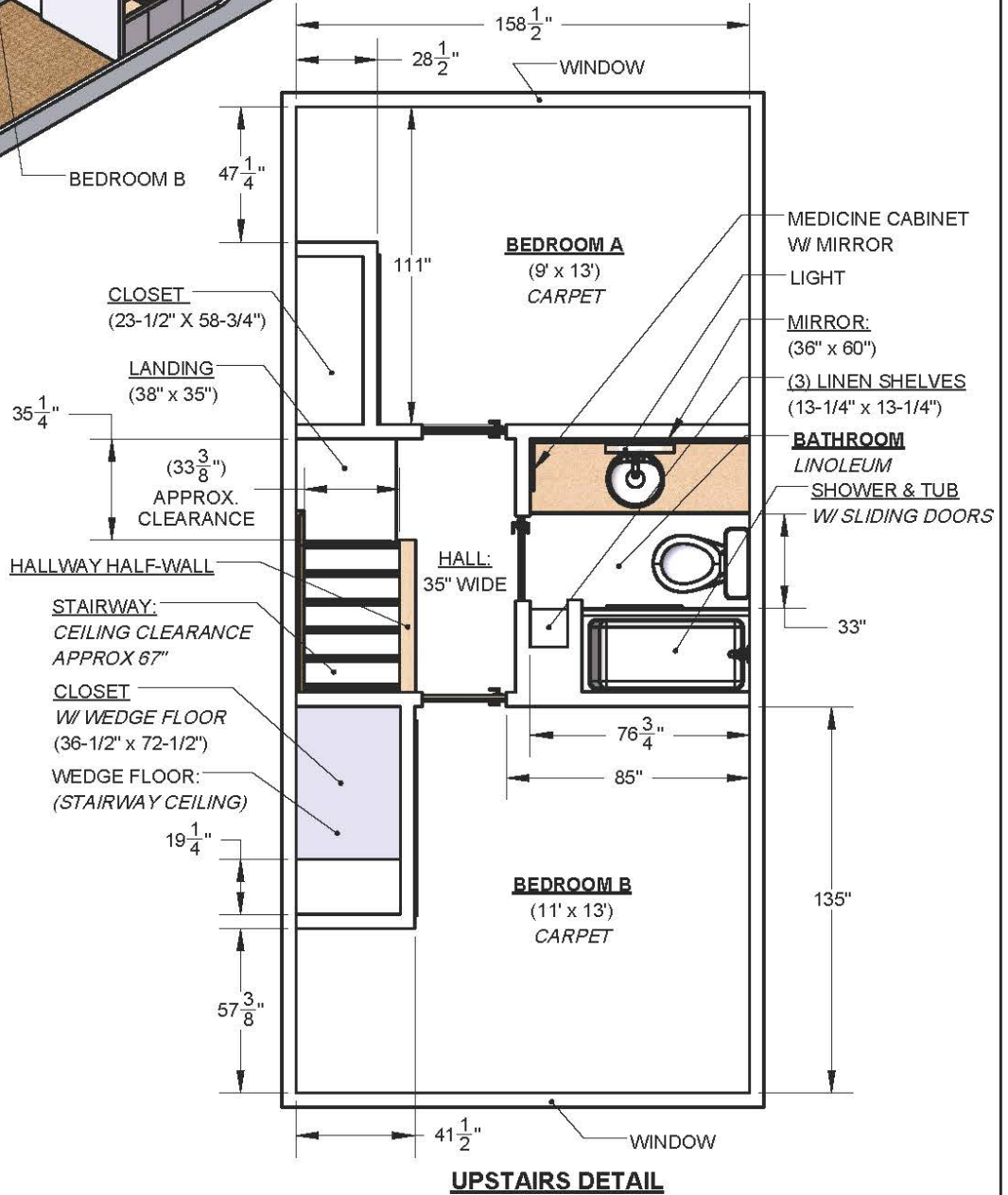
- APPROX. 847 SQ FT
- UPSTAIRS: 327 SQ FT
- DOWNSTAIRS: 522 SQ FT

DOOR SIZES:

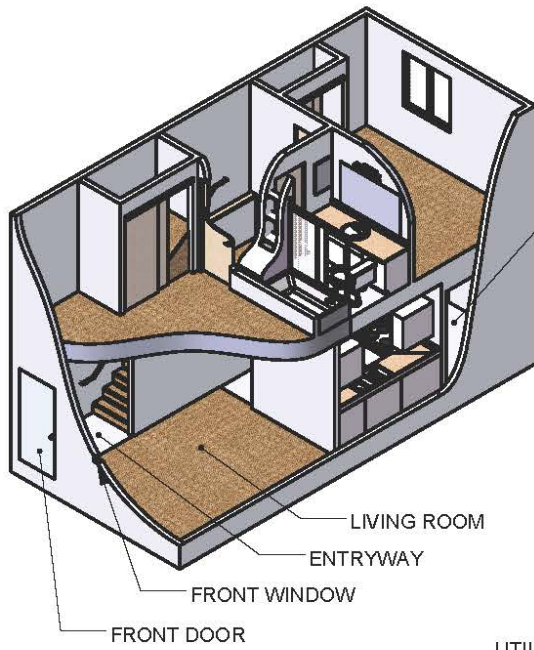
- INTERIOR: 30" x 80"
- CLEARANCE: 29-1/2" x 80"
- EXTERIOR: 35-1/2" x 78"

BEDROOM SIZE:

- A) 9' X 13'
- B) 11' X 13'



				UNIVERSITY APARTMENTS: 2-BR 1-BA	
		DR. GJB 07.22.18		TOWNHOUSE FLOOR PLANS	
REVISION LOG		DATE BY		B0004C SHT. 1 OF 2	



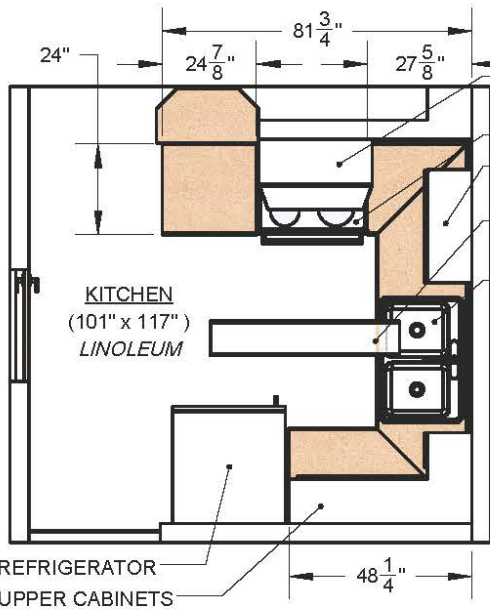
DINING ROOM

LIVING ROOM

ENTRYWAY

FRONT WINDOW

FRONT DOOR



KITCHEN
(101" x 117")
LINOLEUM

REFRIGERATOR
UPPER CABINETS

KITCHEN DETAIL
COUNTER HEIGHT: 36"

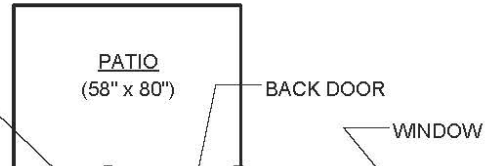
STORAGE DOOR
STORAGE (34" X 55")

CENTRAL AIR SYSTEM

UTILITY ROOM:
INCL WATER HEATER
(NOT SHOWN)

STAIRWAY
APPROX 67" CEILING CLEARANCE

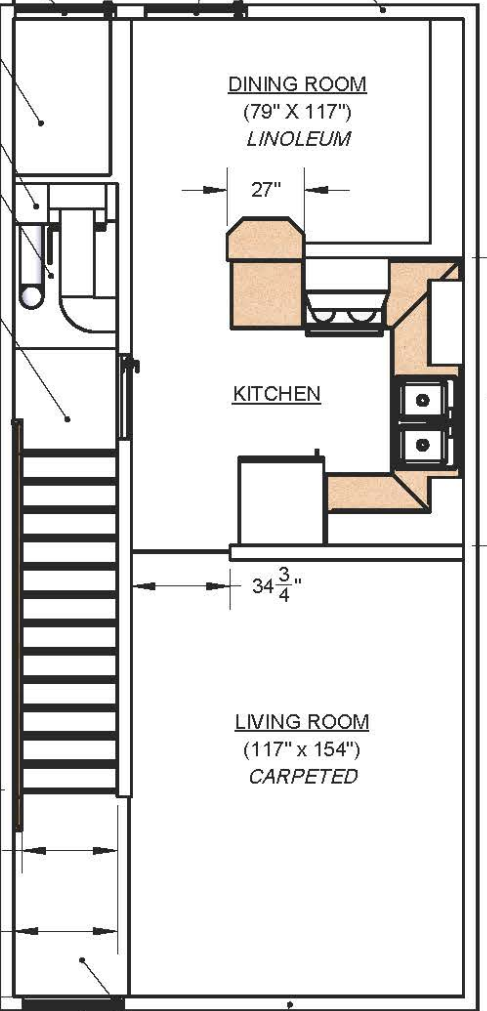
UPPER CABINET W/ RANGE HOOD
STOVE
UPPER CABINET OVERHEAD LIGHT
DOUBLE SINK W/ GARBAGE DISPOSAL



PATIO (58" x 80")

BACK DOOR

WINDOW



DINING ROOM
(79" X 117")
LINOLEUM

27"

KITCHEN

101 1/2"

LIVING ROOM
(117" x 154")
CARPETED

34 3/4"

73"
(33 11/16")
36 1/2"

FRONT DOOR
LINOLEUM ENTRYWAY

WINDOW

DOWNSTAIRS DETAIL

				UNIVERSITY APARTMENTS: 2-BR 1-BA	
		DR. GJB 07.22.18		TOWNHOUSE FLOOR PLANS	
REVISION LOG		DATE BY		B0004C SHT. 2 OF 2	