



# The Future of Skills

## EWU PCE Digital Badging Webinar Series

**Date 02/19/2026 - Staff & Administrators**

### Today's Agenda:

- EWU's digital badge investment
- Current state of EWU digital badging
- Future plans for EWU digital badging



# Meet Our Team

---

## Christi Harter

*Assistant Vice President*

*Professional & Continuing Education*



[charter1@ewu.edu](mailto:charter1@ewu.edu)

217 Showalter Hall  
Cheney, WA 99004

[509.359.2449](tel:509.359.2449)

## Ashley Stettler

*Business Manager*

*Professional & Continuing Education*



[astettler23@ewu.edu](mailto:astettler23@ewu.edu)

217 Showalter Hall  
Cheney, WA 99004

C: [509.359.6849](tel:509.359.6849)

## Mikyla Sears

*Program Coordinator*

*Professional & Continuing Education*



[msears@ewu.edu](mailto:msears@ewu.edu)

217 Showalter  
Cheney, WA 99004

[509.359.6834](tel:509.359.6834)



## **PROFESSIONAL & CONTINUING EDUCATION**

Eastern Washington University

**PCE Mission:** Offer education programs aligned to workforce demands that empower individuals to enhance their skills, advance their careers, and achieve their personal and professional goals.

<b>EWU Strategic Plan</b>	<b>EWU Strategic Enrollment Management Plan</b>	<b>EWU Academic Master Plan</b>
PCE supports student success, belonging/accessibility, and regional impact through workforce-aligned and flexible learning opportunities.	PCE contributes to attract, register, advise, and retain momentum by serving working adults and new audiences through easily accessible programming and enrollment.	PCE supports the move toward high-demand educational modalities and accelerated pathways by operationalizing new offerings in response to learner and employer demand.

# Enhancing Learner Outcomes with Digital Badges

- **SKILL RETENTION:** Embedded microcredentials improve skill retention and course relevance, according to faculty and student feedback in pilot programs.
- **BOOSTING STUDENT SUCCESS:** 75% of institutions report increased retention through microcredentials.
- **ALIGNING WORKFORCE NEEDS:** 85% of employers prefer candidates with credit bearing microcredentials.

[Hanover Research Microcredential Trends May 2025](#)

## CREDENTIALS IN PRACTICE

**Parchment Digital Badges in use across Washington State at:**

- Central Washington University
- Washington State University
- University of Washington
- State Board for Community and Technical Colleges (34 CTC's)

Parchment Digital Badges are nationally recognized for their interoperability & workforce alignment.



# EASTERN WASHINGTON UNIVERSITY'S LEARNING AND EMPLOYMENT RECORD (LER) JOURNEY



## Local, State, & National Collaboration:

EWU partners with WSAC, Greater Spokane Inc., and Providence Health for the NGA Skills-Driven State Community of Practice to align regional skills needs with education via LERs.

**2023**

## National Leadership:

Dr. Christi Harter becomes lead evaluator for SkillsFWD, a national LER pilot project.

Launch of LER Project Showcase featuring EWU + iQ4 Corp LER pilot.

**2024**

## Cohort Initiatives:

EWU joins LER Accelerator Cohort with 25 institutions to accelerate post-secondary adoption of LERs.

## Credentialing Committee:

PCE convenes the EWU Credentialing Committee to establish digital credential awarding procedures.

**2025**

## EWU Digital Badging:

EWU continues work with the LER Accelerator Cohort and 25 institutions.

PCE begins digital badging pilot, expands to degree programs, and explores additional digital credentialing opportunities.

**2026 +**



# **What is a Digital Badge (and what is it not)**



# A Digital Badge IS:

**Skill + Criteria + Evidence + Verification**

- **A verified record of learning**

- Confirms a learner has met clearly defined criteria
- Aligns in-demand skills to learner outcomes
- Issued by EWU as a trusted institution

- **Part of a professional identity**

- Skill tags allow learners to match their qualifications to jobs
- Makes learning outcomes visible beyond course titles or job roles

- **Portable & shareable**

- Easily added to resumes, LinkedIn, social media and more
- Travels with the Learner, not static to the university or issuing department

- **Part of EWU's credential ecosystem**

- Compliments credit bearing and non-credit learning activities)
- Supports and describes what is on the official transcript
- Describes non-credit academic competencies

# **A Digital Badge IS NOT:** A Static Sticker Without Value

- **A replacement for a degree or minor**
  - Badges enhance, not replace, transcribed academic credentials
- **A participation trophy**
  - Badges are earned through demonstrated proficiency, not attendance
- **A marketing icon or sticker**
  - Each badge is tied to approved criteria, outcomes and evidence
  - Not auto-issued without validation
- **A one-off or isolated effort**
  - Badges must align with institutional standards and governance
  - Badges are designed to scale workload evenly across units at EWU
  - Badging requires approval through faculty channels (Chair and Dean approval) and EWU Digital Credential Steering Committee



## EWU Credentialing Committee

- Cross departmental collaboration
- Standards & Governance
- Strategic Growth

# EWU PROFESSIONAL & CONTINUING EDUCATION *Badge Taxonomy*

CATEGORY	IMAGE SHAPE	AUDIENCE	DESCRIPTION	LEVELS
ACADEMIC	SHIELD	STUDENTS	NON-CREDIT AND FOR-CREDIT DIGITAL BADGES AWARDED FOR THE COMPLETION OF TRADITIONAL AND NON-TRADITIONAL ACADEMIC PROGRAMS	1 TO 4
STUDENT LIFE	ROUND	STUDENTS	DIGITAL BADGES AWARDED FOR EXTRA AND CO-CURRICULAR ACTIVITIES.	1 TO 4
PROFESSIONAL DEVELOPMENT	HEXAGON	FACULTY STAFF	DIGITAL BADGES AWARDED FOR THE COMPLETION OF PROFESSIONAL DEVELOPMENT OFFERINGS.	1 TO 4
STANDALONE	SQUARE	STUDENTS FACULTY STAFF	UNIQUE DIGITAL BADGES THAT DO NOT FIT INTO OTHER CATEGORIES.	1 TO 4

# Digital Badge Design: Skill + Criteria + Evidence + Verification

SHIELD



CIRCLE



HEXAGON



SQUARE




# TEFL Example

## Supported Details in MetaData

- Badge name
- Badge Description
- Credit or Hours Associated
- Earning Criteria
- Skills Aligned to Course
- Optional: supplemental artifacts (e.g., assessments, reflections, demonstrations)
- All backed in a verified, evidence-based, tamper-proof, portable digital credential that can be shared by the student

Issuers > EWU Professional & Continuing Education > Seeking Jobs in EFL



## Seeking Jobs in EFL

The Seeking Jobs in EFL badge is awarded to those candidates who complete the Seeking Jobs in EFL, an intensive asynchronous online interactive course consisting of seven modules covering the fundamental ideas that guide experienced Language teachers as they... [\[more\]](#)

Created on: Jan 26, 2026


[Public](#)

[Details](#) [Awards](#) [Claim codes](#) [Analytics](#) [Data management](#)

### Badge details

#### Earning Criteria

Recipients must complete the earning criteria to earn this badge

In order to qualify for a Seeking Jobs in EFL badge, candidates must... [View External Criteria](#) 

Select Space ▼

Dashboard

My Badges

Issuers

Skills

Public

You are a staff member of this Organization.



Organization

# Eastern Washington University

At EWU, you're surrounded by natural beauty and a supportive community as you gain the skills and hands-on experience to start a career you're passionate about.

[Visit website](#) ➞ [Email](#) ✉

1 Issuers

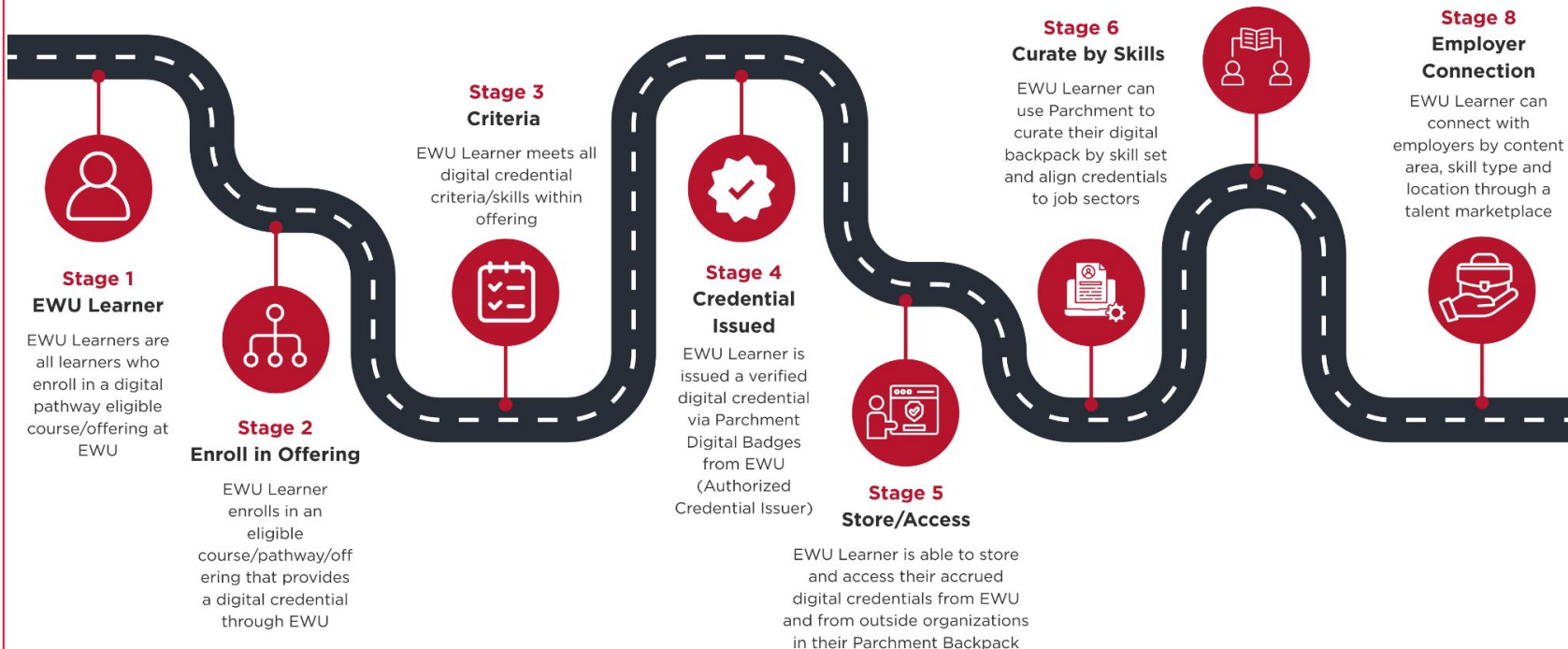
10 Badges

1 Pathways

# EWU LER Roadmap

From Learning to Earning | EWU Eagle's Journey

*Empowering all learners from education to employment*



**The path forward**

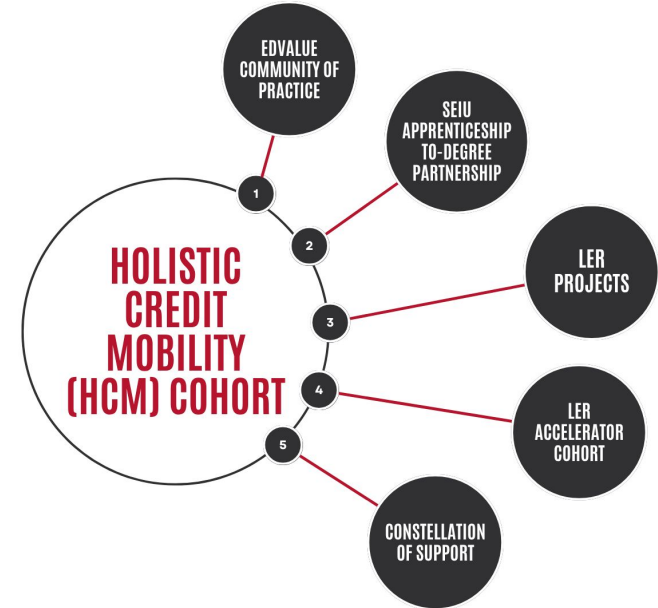




# What's Happening Now

- **Evolving the PCE Pilot (2025-26) to EWU Digital Badge Pilot (2026-27)**
  - This work is always evolving - [learn about EWU Digital Badging](#) and stay connected!
- **Certificates transitioning to Minors**
  - Previously approved through the NWCCU & PIM Certificate processes.
  - EWU has [20 Certificates that transitioned to Minors](#) - is your departments program one of them?
- **Communication Plan:** Working with EWU MarCom (Visit the [EWU Parchment Badge Catalog](#))

## PCE Digital Badge Pilot



# Planning Your Unit's Digital Badging Goals

- **Summer 2026: Finalize EWU Digital Credential Steering Committee**
  - Includes representatives from across EWU Campus
  - Formalizing the university-wide governance digital badging structure
- **Fall 2026: EWU campus digital badge proposal request form goes live**
- **Fall 2026: Launch of EWU Workshop Series**
  - Setting up badge awarding triggers in CanvasLMS
  - How to track and use badging data
  - Using the Parchment Issuer portal
  - How to represent skills aligned to learning outcomes



**EWU EagleSync**



# EWU's Student Engagement Platform

- Central hub for clubs, organizations, and campus events
- Connects students to involvement opportunities
- Guides co-curricular engagement through tracks, checklists, and EagleSync badging
- Recognizes learning and leadership experiences outside the classroom



# EAGLESYNC

# EagleSync Badges are...

- **Created at the Group Level**
  - Student Organization Group
  - Department or College
- **Flexible in Design and Deployment**
  - Can be awarded manually or assigned automatically through designated completion rules
  - Can be created as private so they are not seen by others
  - May be added to LinkedIn. “Add to LinkedIn” button allows students to share on their LinkedIn profile if they want.

# EagleSync Badging Completion Rules

- **Event Based Rules**

- Automatically award badges based on attendance at specific events, a certain number of events within an event type, or events with designated tags during a set timeframe. No manual tracking required.

- **Surveys, Forms, & Quizzes**

- Trigger badges when students submit surveys, forms, or quizzes. Awards can be automated upon submission or held for staff verification.

- **Track & Checklist Completion**

- Issue badges automatically when participants complete all required items within a track or checklist—ideal for leadership series, cohort programs, or milestone-based experiences.



# Questions & Suggestions



# What's Coming Next...More Webinars!

**EWU Faculty Info Session** — [February 24, 2026](#) ← Calendar link

Learn how to represent the skills embedded in your courses and turn learning into credentials employers can see, without redesigning your curriculum.

**Employers & Industry Partners Info Session** — [March 3, 2026](#) ← Calendar link

See how verifiable digital badges help identify real skills, reduce hiring guesswork, and strengthen regional talent pipelines.

**EWU Students Info Session** — [April 15, 2026](#) ← Calendar link

Learn how to share your skills, get noticed by employers, and make your experience count.

## Connect with our Team Today:

- Email: [PCE@EWU.EDU](mailto:PCE@EWU.EDU)
- Office: 217 Showalter Hall, Cheney
- Website: [ewu.edu/pce](http://ewu.edu/pce)

# Thank You!

